

FUNCTION FITTINGS CHECK VALVES PN20

PLUS

**POSSIBILITY TO ASSEMBLE
DIFFERENT SPRINGS FOR DIFFERENT
OPENING PRESSURES**

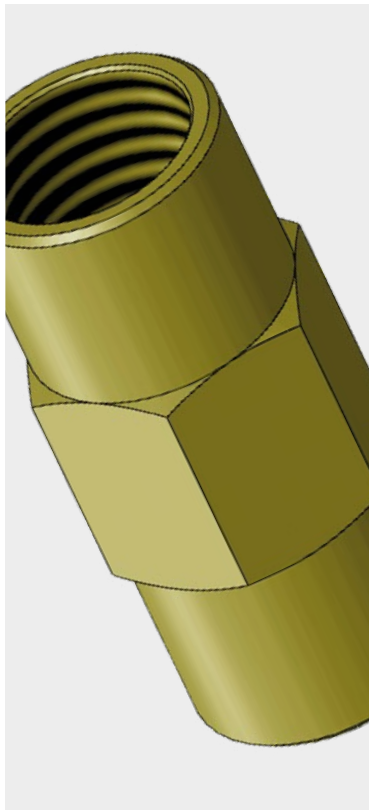
**MAXIMUM CAPACITY WITH
MINIMUM PRESSURE LOSS**

**INDICATOR OF FLOW ON VALVE
BODY**

STRONG DESPITE COMPACT SIZE

**POSSIBILITY TO ASSEMBLE SEALS IN
NBR, FKM AND EPDM**

p. 389 / **1705**p. 390 / **1710**p. 391 / **1730**



NBR: -20°C ÷ 100°C
FKM: -20°C ÷ 205°C
EPDM: -40°C ÷ 130°C



Working pressure:
20 Bar



Compressed air, water, gases,
mineral or synthetic non-
aggressive oils in non-corrosive
environments and fluids
compatible with construction
materials



Fluid flow in one direction
only. Flow direction marked
on the body



Parallel gas BSPP ISO 228
from G 1/8" to G 1"



Body: Yellow brass OT 58
Shutter: Yellow brass OT 58
Shutter support: Yellow brass OT 58
Spring: Stainless steel AISI 302
O-ring: NBR
Retaining ring: Stainless steel
AISI 302

AVAILABILITY

- Can be fitted with O-rings made of FKM or EPDM;
- Different opening pressures on request;



Products in compliance with
EC Regulation 1907/2006

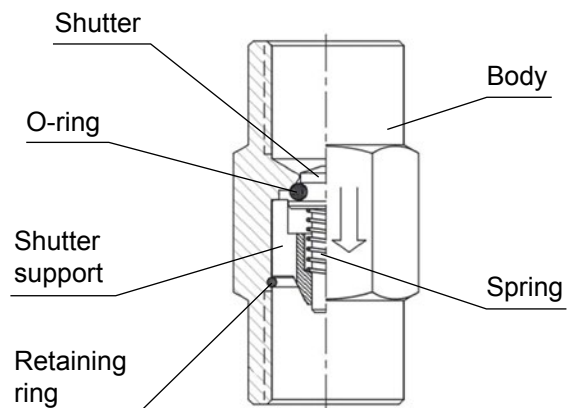


Products in compliance with
the directive EU 2015/863

MINIMUM OPENING PRESSURE

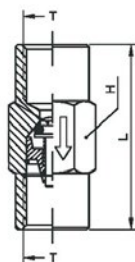
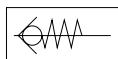
THREAD	G 1/8"	G 1/4"	G 3/8"	G 1/2"	G 3/4"	G 1"
Bar	0,35	0,30	0,25	0,08	0,10	0,80

CONSTRUCTION DETAILS



1705

Female check valve BSPP threa - yellow brass PN 20

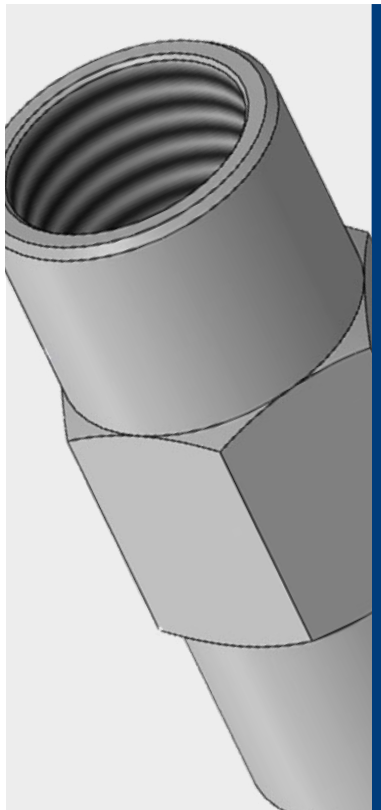


CODE	T	L	H	g
1705TR18	G 1/8"	36,0	17	52,0
1705TR14	G 1/4"	38,5	17	45,0
1705TR38	G 3/8"	45,0	22	90,0
1705TR12	G 1/2"	56,0	27	153,0
1705TR34	G 3/4"	66,5	34	285,0
1705TR1	G 1"	79,0	40	388,0



drawings and technical data are not binding & can be changed without notice

Subject to change



NBR: -20°C ÷ 100°C
FKM: -20°C ÷ 205°C
EPDM: -40°C ÷ 130°C



Working pressure:
20 Bar



Compressed air, water, gases,
mineral or synthetic non-
aggressive oils in non-corrosive
environments and fluids
compatible with construction
materials



Fluid flow in one direction
only. Flow direction marked
on the body



Parallel gas BSPP ISO 228
from G 1/8" to G 1"

Body: Stainless steel AISI 303
Shutter: Stainless steel AISI 303
Shutter support: Acciaio inox
AISI 303
Spring: Stainless steel AISI 302
O-ring: FKM
Retaining ring: Stainless steel
AISI 302



AVAILABILITY

- Can be fitted with NBR or EPDM O-rings;
- Different opening pressures on request;



Products in compliance with
EC Regulation 1907/2006

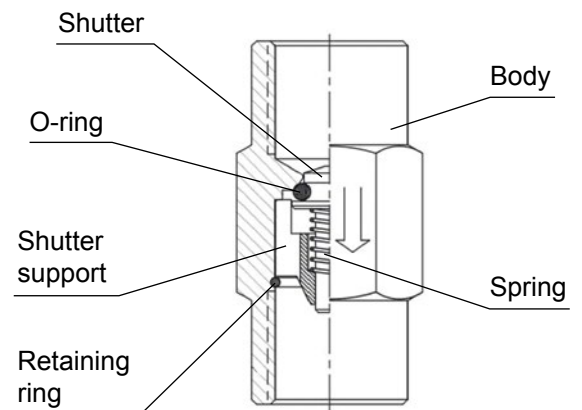


Products in compliance with
the directive EU 2015/863

MINIMUM OPENING PRESSURE

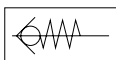
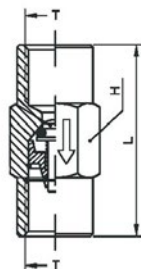
THREAD	G 1/8"	G 1/4"	G 3/8"	G 1/2"	G 3/4"	G 1"
Bar	0,35	0,30	0,25	0,08	0,10	0,80

CONSTRUCTION DETAILS



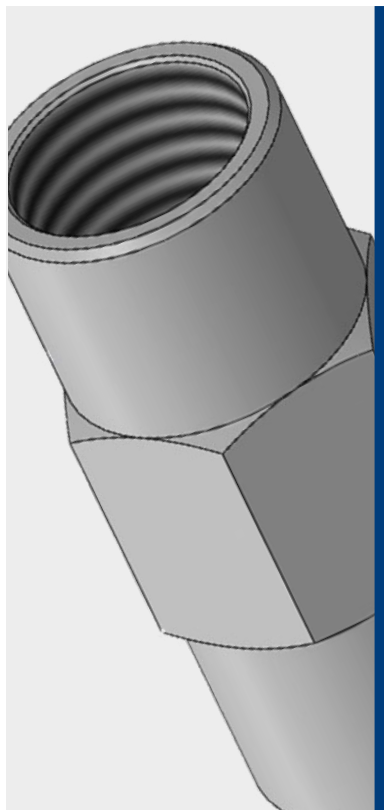
1710

Female check valve BSPP thread - stainless steel AISI 303 PN 20



CODE	T	L	H	g
1710TR18	G 1/8"	36,0	17	48,0
1710TR14	G 1/4"	38,5	17	43,0
1710TR38	G 3/8"	45,0	22	82,0
1710TR12	G 1/2"	56,0	27	143,0
1710TR34	G 3/4"	66,5	36	325,0
1710TR1	G 1"	79,0	41	388,0





NBR: -20°C ÷ 100°C
FKM: -20°C ÷ 205°C
EPDM: -40°C ÷ 130°C



Working pressure:
20 Bar



Compressed air, oxidising,
corrosive environments
and fluids compatible with
construction materials



Fluid flow in one direction
only. Flow direction marked
on the body



Parallel gas BSPP ISO 228
from G 1/8" to G 1"



Body: Stainless steel AISI 316L
Shutter: Stainless steel AISI 316L
Shutter support: Stainless steel
AISI 316L
Spring: Stainless steel AISI 302
O-ring: FKM
Retaining ring: Stainless steel
AISI 302



Food contact materials
EC 1935/2004



D.M. 174/2004



Products in compliance with
EC Regulation 1907/2006



Products in compliance with
the directive EU 2015/863

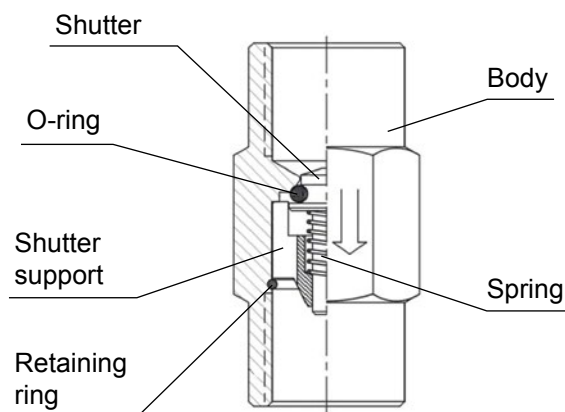
MINIMUM OPENING PRESSURE

FILETTO	G 1/8"	G 1/4"	G 3/8"	G 1/2"	G 3/4"	G 1"
Bar	0,35	0,30	0,25	0,08	0,10	0,80

AVAILABILITY

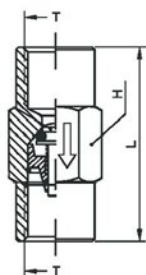
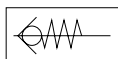
- Can be fitted with NBR and EPDM O-rings;
- Different opening pressures on request;

CONSTRUCTION DETAILS



1730

Female check valve BSPP thread - stainless steel AISI 316L PN 20



CODE	T	L	H	g
1730TR18	G 1/8"	36,0	17	48,0
1730TR14	G 1/4"	38,5	17	43,0
1730TR38	G 3/8"	45,0	22	84,0
1730TR12	G 1/2"	56,0	27	143,0
1730TR34	G 3/4"	66,5	36	330,0
1730TR1	G 1"	79,0	41	388,0



drawings and technical data are not binding & can be changed without notice

Subject to change